

BEAUTIFUL BUILDINGS

WITH

H & B DELTA





The philosophy of H&B delta is to create spaces for cooperation with customers, employees, and collaborators. These spaces are defined by three dimensions: **Trust, Division, Discipline.**

# TRUST

- **Trust** is a prerequisite for a solid business relationship.

# DIVISION

- **Division** is the principle of good business relations based on cooperation that is beneficial for both parties.

# DISCIPLINE

- The accuracy and high quality of work is guaranteed by our **Discipline.**

These three dimensions define the space we create for cooperation with you. Let's deepen and improve these dimensions, and create a space of endless cooperation.



  
H&B delta

20

FOR THREE DECADES WE HAVE BEEN BUILDING UP A TRADITION IN THE FIELDS OF PLUMBING, ROOFING, CARPENTRY, INSULATING, AND FACADE REPAIRS (ESPECIALLY HISTORICAL FACADES, INCLUDING RESTORATION WORK). DURING THIS TIME, WE HAVE COMPLETED 3,000 ROOF PROJECTS, AS WELL AS HUNDREDS OF VENTILATED FACADES, WHICH ARE THE FOCUS OF OUR LIGHT PERIMETER CLADDING DIVISION (LPC) DIVISION. WE ARE A FOUNDING MEMBER OF THE GUILD OF PLUMBERS, ROOFERS, AND CARPENTERS, AS WELL AS THE ASSOCIATION OF BUILDING ENTREPRENEURS. OUR GOAL IS TO PROVIDE QUALITY AND HONEST CRAFTSMANSHIP. WE HAVE RECEIVED NUMEROUS AWARDS FOR OUR WORK AND PRIDE OURSELVES ON A SENSITIVE APPROACH TO HISTORICAL AND CULTURAL VALUES. WE ARE ALSO GLAD TO WORK WITH MODERN ARCHITECTURE.

# INTRODUCTION

## NASCENCY

In the beginning, I just had a vision of expanding the business to include roofs and to make them different, modern, and using the best materials. It was 1993, and the whole country was living through the euphoria of change. Bramac, an Austrian company, and quality roof tiles became the symbol of the change in roofs, for which we supplied assembly services with enthusiasm and with initial shortcomings, but at the same time with the desire to learn and improve every day.

## GROWTH

Soon we had demand exceeding our capacities and we grew rapidly. At an exhibition in Ostrava, at our stand, customers stood in line to get information and an offer. A great time and an exceptional opportunity. After only a few years, schools, apartment buildings and other larger buildings, a wider choice of materials, and modern equipment were added to our portfolio of products for family homes. And construction companies have become our main customer segment.

## ADULTHOOD

We have always been close to sacral buildings and monuments, and after ten years we began to work on the first of them. Thanks to good references, we opened the way to independence from construction companies and became a general contractor of buildings, with a focus on roofs and facades. We have built a professional background for our team of engineers and technicians, including a factory for sheet metal building elements.

## PRESENT

In recent years, we have expanded our offer meant for lightweight modern facades, which we produce and assemble. In the development department, we focus on innovations that bring new technical, esthetic, and environmental solutions. We consider it a privilege and a gift to give historical and modern buildings a face with the H&B delta branded solutions.

## FUTURE

We perceive the roof and facade as contact surfaces with the natural environment and sources of energy. We are beginning to use them to a much greater extent for the production of electricity and for water collection, and also connect them with nature in a non-conflictual way by implementing natural elements directly onto their surface in the form of green roofs and green facades. We already have a number of solutions for the future, and are working on new ones in cooperation with Czech universities.

PETR HURTA, Founder of the Company







No company would be a good company if there weren't great people working in it. People who are experts in their field, but also people who want to grow both professionally and personally. For the past 30 years, we have managed to create great working teams with excellent people in the company. People who are not afraid of challenges, for whom an obstacle is just a necessity for further growth, who value customers, suppliers, and each other. It is a great honor for me to work with people who are of character and yet efficient and dedicated to their work.

As a company, we have achieved many important awards both in the Czech Republic and abroad. We work on important buildings that formed the history of our nation. Together with architects, we create new modern facades. We can support the non-profit sector and some families who need help because of a disability. We wouldn't have achieved all of the above if our people hadn't formed a company called H&B delta.

Our future is not only a good strategy, but the future of our company is people and therefore I am very much looking forward to it.

ONDŘEJ HURTA, Managing Director

Modern architecture touches our lives at almost every moment, and we have the unique opportunity to be at the origin of such buildings. Often, from the first thoughts of the customer or architect, we are their partners and guides on the way to the right face, which will imprint the object with uniqueness and unmistakability. It is a journey that pleases and fulfills us, although it is not always easy. At the beginning of our production work, there was an ordinary tinsmith workshop and simple sheet metal products. Simply a background for the growing activities of the Roofs and Buildings Division. But in the course of time, this division became independent and greatly expanded its portfolio of products and materials, and the original name ceased to be linked to our production. It has changed and evolved from easily repeatable products to custom production of ventilated facades. However, our journey has not ended; rather, it is beginning. Architecture is changing dynamically, and with it so are the requirements. We know that our path will lead both to individual solutions and in the future to block, solar, and green facades, so that we can continue providing our customers with what our lightweight ventilated enclosures offer them now: the future of modern architecture with high thermal comfort and low energy consumption.

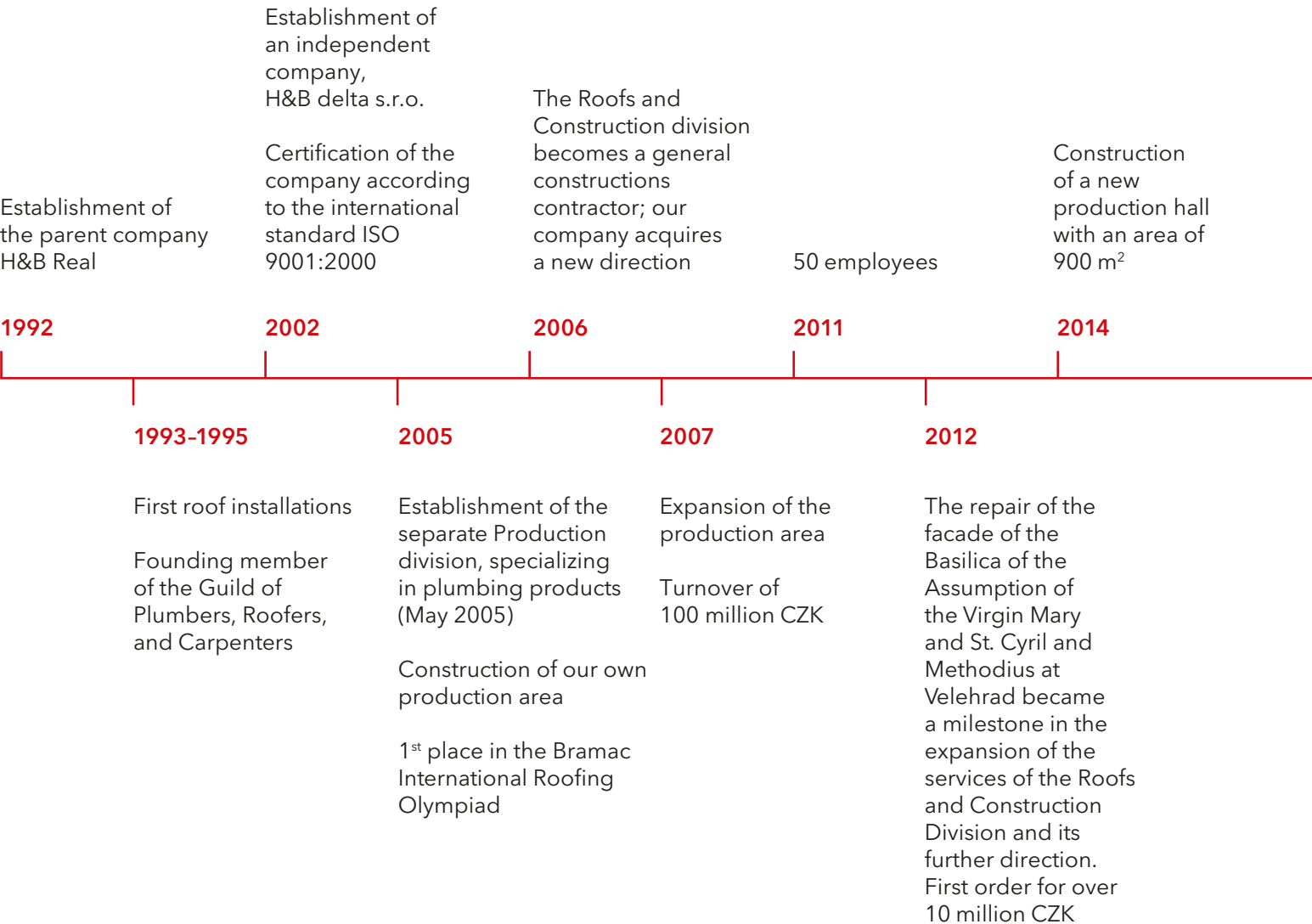
PETR ZAVIČÁK, Director of the Light Ventilated Roofs Division

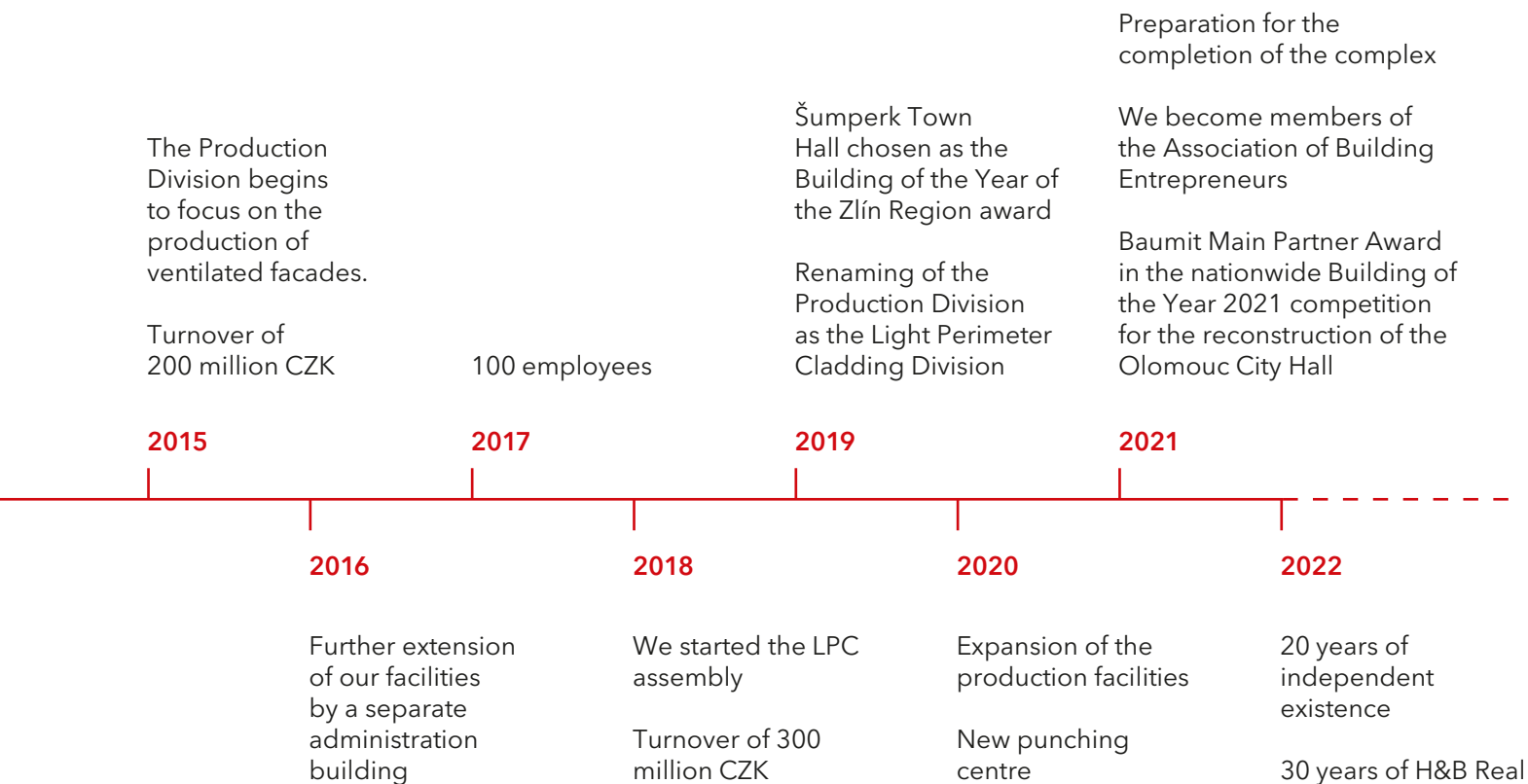


Roofs and historical facades are not just work for us. We enjoy it. Like a golden thread, our division weaves together the mutual respect and cooperation of all people. Without this trust, we cannot imagine the implementation of demanding orders, which are located in our diverse portfolio of buildings. The work on monuments is the collective work of many a craftsman, supplier, conservationist, and investor. Often it is a long process lasting several years. Working in construction and on rooftops is hard and carries with it a certain level of risk. However, at the same time it offers you a unique experience. Especially with rooftops, every day you look at the world from a perspective that is denied to the majority of the population. The world in front of you lies in the palm of your hand and you are closer to the sky. You feel the vagaries of the weather much more intensely, but you would not want to change it. But our field is much more extensive; it is not just monuments. Especially in recent years, the construction industry has been developing intensively. We are aware of this and are responding to these changes and new trends. We invest in the future and in the education of craftsmen, whose numbers are declining in the construction industry. We try to relieve them of demanding work and relieve physical strain. Modern handling equipment and professional tools are a matter of course for us. We believe in the future of our craft.

TOMÁŠ TKADLEC, Director of the Roofs and Construction Division

# COMPANY MILESTONES





# THE BASIS OF THE COMPANY IS PEOPLE

We are a construction engineering company that supports its employees with a number of benefits that contribute to the creation and strengthening of relationships in the workplace, whether it is a meal voucher lump sum, supplementary pension insurance, medical leave, or an annual bonus or preferential employee loans. The cornerstones of the company include employees who are experts in their fields. The gradually developing company builds on the long history of sheet metal processing and flat materials.

For the realized orders, the company has received a number of awards in both divisions for roofs and facades, as well as for ventilated facades. Of course, there is a friendly team and helpful company management.

Last but not least, the company provides employees with high-quality training for all new employees and subsequent improvement of qualifications through various types of training.





# INVESTING IN THE FUTURE

H&B delta s.r.o. is one of the major employers within the Vsetín region with a focus on construction and engineering. At the same time, we support education in these fields and for this reason we have been cooperating with secondary schools in the area for several years.

The company is one of what are termed the social partners of the Secondary Technical School of Engineering in Vsetín. Representatives of the company regularly meet with the management of this secondary school and other partners at what is called the High School Roundtable meeting. We offer 'practical courses' to students of mechanical engineering.

We sponsor the Josef Soušedík Secondary Vocational School in Vsetín and at the same time we offer the students of this school an internship in production,

during which they can get acquainted with the machinery and the operation of the tinsmith workshop. H&B delta is also a member of the Alliance of Engineering in Education, which operates under the auspices of this school and which brings together employers in the Vsetín region with a focus on engineering production.

Last but not least, it is necessary to mention our cooperation with the Secondary Technical School of Civil Engineering in Valašské Meziříčí. Our lectures for students take place there regularly. Thanks to this cooperation, our company enjoys the interest of graduates in working at H&B Delta. A number of students have already completed an internship in the LPC division, where they used their experience and, on the other hand, got to know the use of the field in practice.

Not only secondary schools have shown interest in cooperation in recent years. Traditionally, the company also participates in the Technical Fair, where elementary school pupils visit the premises of the tinsmith workshop and are acquainted with the production and products made of sheet metal. We are gradually establishing cooperation with universities (Brno University of Technology, Czech Technical University in Prague).



# CORPORATE SOCIAL RESPONSIBILITY

## JITKA HOME

Every year we financially support the Jitka Home in Vsetín, which serves as a weekly day care center for people with mental and general disabilities. The aim of the service of this weekly day care center is to enable people with intellectual and general disabilities to live a life that corresponds as much as possible to the life of their peers of the same age in mainstream society.



## UNITED FESTIVAL

UNITED is a Christian multi-genre festival that takes place at the end of the holidays in Vsetín. The first festival took place in 2011.





### ATLETICO CLUBHOUSE

We supported the establishment of the Atletico clubhouse in Vsetín, which serves children and young people.



### VSETÍN FILM CLUB

We have been supporting the Film Club, which has been an open space for all incoming film art lovers since 1991, for a long time.

### VSETÍN DIACONIA

We supported Vsetín Diaconia and the construction of the new Domov Vyhlička pavilion.



### CHILDREN'S CHRISTMAS TOWN

The proceeds from the event we organize, at which children and students sell self-made products, are donated annually to charity.







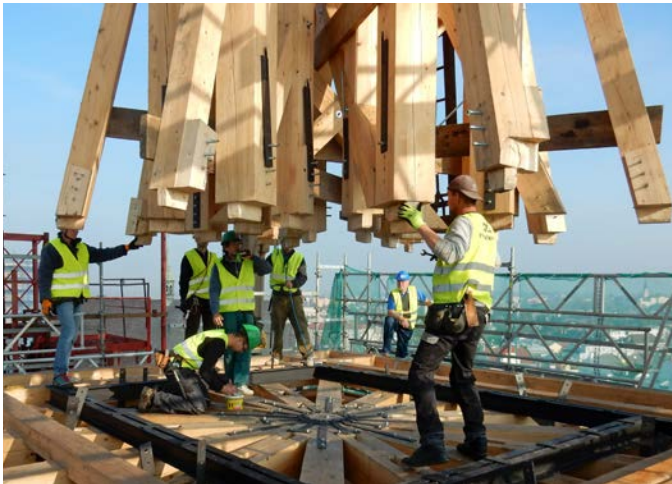


# H & B DELTA

## ROOFS AND CONSTRUCTION DIVISION

H & B DELTA'S ROOFS AND CONSTRUCTION DIVISION IMPLEMENTS ALL TYPES OF BUILDINGS WITH A WIDE RANGE OF SERVICES. WE SPECIALIZE MAINLY IN ROOFS AND FACADES OF RELIGIOUS AND HISTORICAL BUILDINGS. WE HAVE MANY YEARS OF EXPERIENCE IN THE RECONSTRUCTION OF LISTED BUILDINGS, INCLUDING A NUMBER OF CHURCHES. WE HAVE REALIZED EXTENSIVE ROOF PROJECTS IN CASTLES AND CHATEAUX. WE CARRY OUT THE WORK MAINLY IN THE FORM OF GENERAL DELIVERIES. WE REALIZE ALL TYPES OF ROOF PROJECTS, INCLUDING GREEN ROOFS. WE RELY PRIMARILY ON OUR LARGE INTERNAL CORE TEAM OF EXPERTS (INCLUDING TEN AUTHORIZED PERSONS), TECHNICIANS AND CRAFTSMEN, AND PROVEN SUBCONTRACTORS.

# SERVICES OF THE ROOFS AND CONSTRUCTION DIVISION



## CARPENTRY WORK

Wooden structures are the basis of any roof, and their execution fundamentally affects the subsequent laying of the roofing material. Our carpenters have experience gained and tested in extensive roof reconstructions on the most demanding historical and religious buildings. Many years of experience and an extensive portfolio of references are a guarantee of high-quality carpentry work, from simple to specialized atypical tower structures and reconstructions of historical trusses. In the work of our specialists, we use a combination of traditional procedures and modern knowledge, which guarantees that you will always get the highest-quality carpentry work from us.



## ROOFING

We realize all types of roofs (mansards, hip roofs, counter flashing roofs, saddle roofs, tent roofs, sawtooth roofs, flat roofs, etc.), from all types of roofing materials (burnt tile, concrete tile, slate, "Monk and nun" tiles, wooden shingles...), pitched and flat roofs, of any difficulty, including all additional roof constructions (roof windows, lightning conductors, etc.). We specialize mainly in demanding roofs of historical and religious buildings. Thanks to a stable and experienced team of experts, we can guarantee you the selection of the right material, but also that the roofing work will be done in the highest possible quality.



## PLUMBING WORK

For plumbing work, we use a wide range of materials, most often copper, titanium zinc, and aluminum and galvanized aluminum from proven suppliers. We make the tinsmith elements ourselves. Here we rely not only on our skilled tinsmiths, but we also use an extensive machine park (CNC machining centers, milling cutters, press brakes, bending machines) and the rich material processing background of the company. Thanks to this, we can meet even the most demanding requirements in ideal terms and at optimal cost. You can meet our plumbing work on a number of roofs and towers of religious and historical buildings. We pride ourselves on the quality of our work and precise craftsmanship.



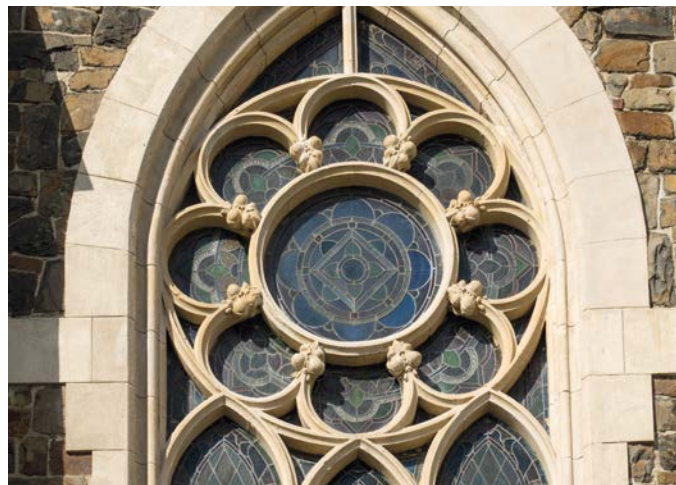
## TRAPPING AND BLACKSMITHING WORK

Not only when working on historical and listed buildings, we often get into a situation where blacksmith work (including artistic work) and trapping work are needed. On the basis of many years of experience, we are able to realize demanding tasks (the production of dormers, turrets, wind roses, and other decorative elements for roofs) when renovating various types of buildings and reviving listed buildings. We rely on experienced employees and recognized craftsmen in the field cooperating with us on a long-term basis.



## STUCCO WORK

Decorative moldings and cornices, listels, fabions, ceiling rosettes, ornaments, and sculptures – stucco and decoration made of plaster are an inherently feature of the facades of historical buildings. The reconstruction of these elements restores the faded beauty of these structures. We have participated in a number of building projects through stucco works, such as the Velehrad Basilica, the church in Sosnová, the archbishop's seminary in Olomouc, the church in Krnov, the city hall in Olomouc and the town hall in Šumperk, and the Hošťálková chateau.



## RESTORATION OF STONE AND SCULPTURAL ELEMENTS

Stone has been used in construction since the latter's very beginning. It is only natural that it occurs in churches and historical buildings to a considerable extent, especially in comparison with contemporary architecture. We perform not only the reconstruction of stone elements and the repair of damaged parts, but also the reconstruction of larger elements. Common activities include cleaning, hydrophobization, color retouching, desalination, reinforcement, grouting, and final surface treatment.





## RESTORATION OF THE PAINTING DECORATION OF HISTORICAL FACADES

Historical facades were often richly decorated in the past. During their reconstruction, the restoration of the paintings that were part of them is an obvious requirement. In cooperation with renowned restorers and artists, we ensure not only the exploration of plaster and the uncovering of secondary layers and cleaning and conservation of the masonry, but also the artistic design itself and its implementation.



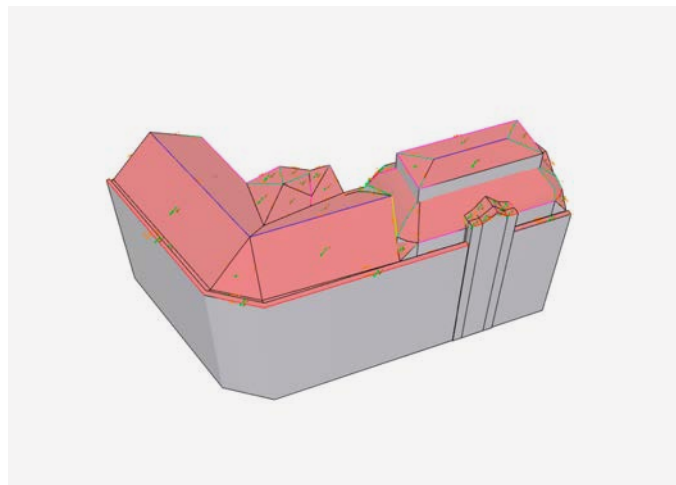
## STAINED GLASS

Glass mosaic fillings have been an integral part of church buildings for many centuries, especially when it comes to windows. When renovating facades, we also perform restoration of stained glass, inserted into lead and painted profiles, in cooperation with renowned holders of restoration licenses. Thanks to the coordination of crafts, costs and time savings are reduced for the investor, especially in the field of the installation of building scaffolding, but also in plumbing and masonry work for the final treatment of lining.



## ZLACENÍ

Gilding of tinsmith and other decorative elements of roofs and facades (e.g., domes, turrets, banners, crosses, clock faces, and flagpoles) is a common part of our work. Here, too, we ensure the coordination between craftsmen, e.g., restoration of the surface for gilding with a haberdashery by a tinsmith or armoursmith. As a rule, it is gilding with gold leaf, which gives the elements a proper shine, but also serves as a protection against corrosion and the influence of the weather.



## DIGITAL SURVEY AND 3D MODEL OF THE ROOF

A digital survey is a significant time saver. For satellite surveying of the roof, only the address of a structure anywhere in the Czech Republic is sufficient. The output includes a floor plan drawing that guarantees a simple and quick check of the correctness of the survey, a table of dimensions, and an active 3D model that can easily be viewed in a PDF viewer. The documentation contains not only the measured values (area, ridge, gorge, etc.), but also the snow and wind area. You'll quickly get a quote and save on the travel costs and scaffolding needed for traditional surveying. Saving time is especially suitable in the event of accidents, when it is necessary to repair the roof quickly. The deviation of the measurement from reality is up to a maximum of 2% of a dimension.

# AWARDS

- 2003 Bramac – 2<sup>nd</sup> place in the Public Buildings category – reconstruction of an operational building in **Povodí Odry, Staré Hamry**
- 2004 Bramac – 2<sup>nd</sup> place in the Building Renovation category (international award)
- 2004 Bramac – 1<sup>st</sup> place in the Public Buildings category – new buildings of the **Residential house Bílovice-Polanka**
- 2006 TONDACH Burnt Roof 2006 – 1<sup>st</sup> place in the Residential (apartment) House category
- 2006 Bramac Roofing Championship 2006 – Public Buildings category – **new buildings of the residential area near the Hostivař dam, Prague 15**
- 2006 Bramac Roofing Championship 2006 – 2<sup>nd</sup> place in the Public Buildings category – **Spa Center Luhačovice**
- 2007 TONDACH Burnt Roof 2007 – 1<sup>st</sup> place in the Public Buildings category – **Pošta Kroměříž**
- 2007 PREFA Bull Of The Year 2007 – **Family home' in Horní Bečva**
- 2009 TONDACH Pálená střecha 2009 – 2<sup>nd</sup> place in the Public Buildings category – **rectory in Vsetín**
- 2010 TONDACH Pálená střecha 2010 – 3<sup>rd</sup> place in the Public Buildings category – **CČE Diaconia in Klobouky u Brna**
- 2013 Guild of KPT – Best Tinsmith Work 2013 (Memorial of Jiří Krmášek) – **Church of St. Nicholas in Bílovec**
- 2013 Craftsman of the Year 2013 – Honorable Mention – **Villa Samčanka in Staré Hamry**
- 2014 J.M. Olbrich Prize – **Church of the Assumption of the Virgin Mary in Vítkov**
- 2014 PREFA Bull Of The Year 2014 – 3<sup>rd</sup> place – **Mazanka Praha**
- 2015 Guild of KPT – Best Tinsmith Work 2015 (Memorial of Jiří Krmášek) – 3<sup>rd</sup> place for **the tower of the Town Hall of Prostějov**
- 2015 TONDACH Burnt Roof 2015 – 2<sup>nd</sup> place in the Historical Buildings category – **Zlín ZOO stables**
- 2016 TONDACH Burnt Roof 2016 – 1<sup>nd</sup> Roofers for themselves in the Historical Buildings category – **Zlín ZOO stables**
- 2017 TONDACH Burnt Roof 2017 – 1<sup>st</sup> place in the Historical Buildings category – **Bítov Castle**
- 2018 TONDACH TONDACH Burnt Roof 2018 – 1<sup>st</sup> place Roofers for themselves in the Public buildings category – **Olomouc City Hall**
- 2018 TONDACH Burnt roof 2018 – 3<sup>rd</sup> place in the Public Benefit Buildings category for the **Olomouc City Hall**
- 2019 Building of the Year 2019 of the Zlín Region – Honorable Mention in the Buildings Realized outside the Zlín Region category – **Šumperk Town Hall**
- 2019 Building of the Year MSK 2019 – Honorable Mention for the **Red Castle in Hradec nad Moravicí**
- 2019 Monument of the Year 2019 – the Olomouc Region – **National House in Prostějov**
- 2019 Monument of the Year of the Czech Republic – **Chateau in Čechy pod Kosířem**
- 2019 Opera Historica 2019 – Prize of the Minister for Regional Development – **Chateau in Čechy pod Kosířem**
- 2019 Opera Historica 2019 – Award of the Governor of the Olomouc Region – **Chateau in Čechy pod Kosířem**
- 2020 Building of the Year of the Zlín Region 2020 – Honorable Mention in the Buildings Realized outside the Zlín Region category – **Olomouc City Hall**
- 2020 TONDACH Burnt Roof 2020 – 1<sup>st</sup> place in the Public Buildings category – **Šumperk Town Hall**
- 2020 TONDACH Burnt Roof 2020 – Roofers for Themselves – **Šumperk Town Hall**
- 2020 TONDACH Burnt Roof 2020 – 3<sup>rd</sup> place in the Public Buildings category – **Spořitelna Krnov**
- 2021 Construction of the Olomouc Region 2020 – Honorable Mention – **Olomouc City Hall**
- 2021 Competition for Masterpiece 2021 Guild KPT – 1<sup>st</sup> place – **Olomouc City Hall**
- 2021 Building of the Year 2020 – Award of the main partner of Baupart – **Olomouc City Hall**



# SELECTED REFERENCES OF THE ROOFS AND CONSTRUCTION DIVISION











# H & B DELTA

## LIGHTWEIGHT EXTERIOR CLADDING DIVISION

THE LIGHTWEIGHT EXTERIOR CLADDING DIVISION OF H&B DELTA S. R. O. SPECIALIZES IN VENTILATED FACADES. WE FOCUS ON SHEET METAL BENDING AND CHAMFERING AND FORMATTING FIBER-CEMENT BOARDS, HIGH-PRESSURE LAMINATES, AND COMPOSITE MATERIALS. WE PRODUCE FACADE CASSETTES AND SLATS MADE OF SHEET METAL AND BOND, PLUMBING PRODUCTS, OR LIGHTWEIGHT SHEET METAL ROOFING. WE PROCESS SHEETS UP TO 6 M LONG AND 4 MM THICK. WE PLACE THE EMPHASIS ON THE DEVELOPMENT OF OUR OWN PRODUCTS AND SOLUTIONS.

# MODERN MACHINE PARK



The production and preparation of building cladding takes place in our production area in Vsetín, where we will be happy to present to you a wide range of samples of materials suitable for your facade. We are not limited to just one type of material, but offer bond, fiber cement, high-pressure laminate, and sheet metal facades, as well as less traditional materials (Rockpanel) or exclusive ones (Tecu Gold, artificial stone).

## OUR MACHINERY

- CNC punching press
- CNC milling centers
- RAS XXL bending center
- Hydraulic table shears
- Press brakes and bending machines
- Automatic milling machine and an Alubender bending machine
- Bending machine

## MATERIALS SERVICES

- Processing of sheets by CNC and NC machines
- Longitudinal separation
- Transverse separation
- Inflection
- Bending
- Folding
- Punching and stamping
- Formatting
- Welding
- Gluing
- Wide range of materials in a wide range of colors and a large amount of stock
- Material consultancy, material sampling

# SERVICES AND CONSULTANCY

For the area of lightweight exterior cladding, we provide a complete service. This consists of helping designers and architects (e.g., in the design of the joint cut, details, etc.), and in the preparation of technical documentation, in consultancy (in material and construction), as well as in production and assembly itself. If necessary, we will also recommend a suitable architect with experience in the field of lightweight exterior cladding, who will design a suitable type of facade. Of course, there is a friendly approach or options for a variant solution. You can choose between alternatives. Take advantage of our long-term experience.

## **WE PLACE THE EMPHASIS ON CONSULTATIONS WITH ARCHITECTS AND DESIGNERS ALREADY AT THE STAGE OF PROJECT PREPARATION AND STUDIES, IF POSSIBLE, FROM THE BEGINNING OF THE PROJECT, WHEN A WIDE SELECTION OF ARCHITECTURAL DESIGN OPTIONS FOR THE BUILDING IS OFFERED (VARIOUS DESIGNS OF TILES AND MATERIALS).**

- Consultation of technical solutions, proposals for the concept of the solutions using ventilated tiles, lightweight exterior cladding, and related structures.
- Selection of the most suitable type and design of facade cladding and its supporting structure, including additional flashing elements, attics, lining, lintels, profiles, and ventilation grilles for facades.
- Design of atypical solutions for built structures.
- Proposals for possible savings in implementation costs in relation to the investor's requirements.
- Sampling and independent assessment of the suitability of the proposed materials.

## **PREPARATION OF PROJECTS OF SPECIFIC TYPES OF FACADES FOR EXISTING AND NEW BUILDINGS**

- Production documentation of individual structural elements for realization companies.
- Implementation projects.
- Assembly documentation.
- Cutting plans and cost optimization.

## **DOCUMENTATION AND DETAILS**

- A separate website, *hbdeltadesign.cz*, is dedicated to ventilated facades; there you can download all the necessary technical information, declarations of conformity, and assembly details that you can use in your projects. There is also a number of reference photographs of buildings with the individual materials used. We will be happy to send you printed catalogs (as well as samples of materials) at any time. Just contact one of our business and technical advisors.

## **FOCUS OF THE FACADE**

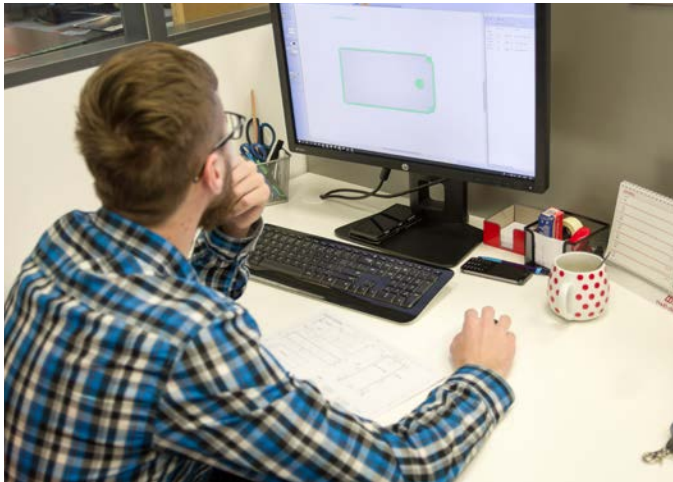
- Each building has individual requirements, and not only the initial precise focus of the facade but also a revision of the focus caused by the course of construction may be necessary. You can rely on our technicians with their many years of experience.

## **PRODUCTION AND TRANSPORT**

- In addition to the production itself in our own production plant, it is a matter of course to ensure the transport of products to the construction site, even in individual stages according to the needs of a particular project.



# FROM PROJECT TO IMPLEMENTATION



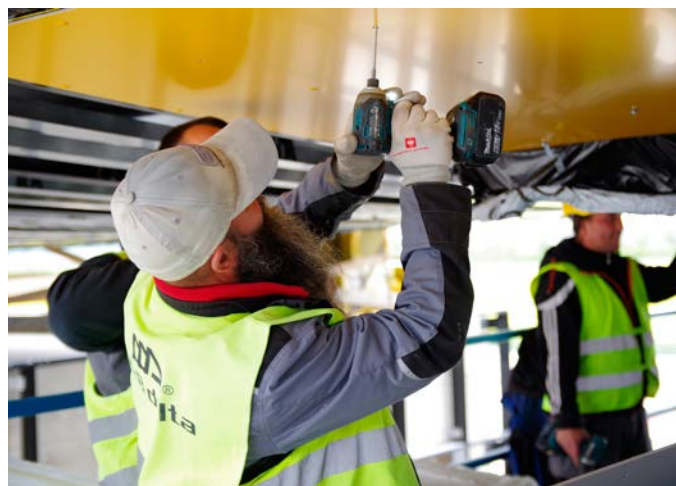
We offer consultancy in connection with the installation of ventilated facade systems, especially for structurally and esthetically demanding structures. Take advantage of our extensive experience in cold forming, milling, and punching. Thanks to our knowledge of a wide range of materials, we are able to design suitable substitutions and carry out cost optimization.

## HELPING PARTNERS

- Material sampling before delivery
- Wide range of materials and substructures
- Design of atypical facade elements and customer solutions
- Documents for material orders
- Cut optimization
- Supplies of formatted material according to requirements
- Technical instruction, technological procedures for assembly
- Assistance, inspection, and installation consultancy
- Provision of tensile tests on the construction site
- 100% design functionality assurance



# INSTALLATION OF VENTILATED FACADES



We offer our customers the installation of facades supplied by us. We provide installation using our own capacity or in cooperation with renowned implementation companies with whom we have been cooperating for a long time and who are familiar with our facades in detail and thoroughly trained. During assembly by our company, the implementation is carried out by workers with many years of experience. Installation of some types of suspended facades is possible even under adverse climatic conditions, and therefore throughout the year.

## COMPLETE SERVICES

- Including scaffolding, material transport, and waste collection.
- Coordination of other professions and subcontractors (windows, roof, lightning conductors, downpipes, waste, advertising...) associated with the facade.
- We have solved all the facade details, which we simply adapt to a specific building.

## WE ASSEMBLE

- We are engaged not only in the installation of facades, but also attics, soffits, and other tinsmith elements related to the ventilated facade.

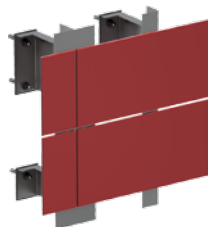
# PRODUCTS

## BOND FACADES

CASSETTE BOND SZ1



BOARD BOND SK1



CASSETTE BOND ZK1



BOARD BOND VK1



## FACADES MADE OF BOARD MATERIALS

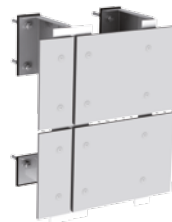
BOARD VCD SK1



BOARD VCD SK2



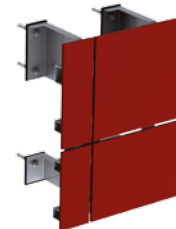
BOARD VCD VK1



BOARD HPL SK1



BOARD HPL SK2



BOARD HPL VK1



METAL FACADES

CASSETTE PK VK1



CASSETTE PK SK1



DESIGN PROFILE TR VK1



LAMELLA LAM SK1



CASSETTE PK VK2



CASSETTE PK SK2



DESIGN PROFILE PP VK1



LAMELLA LAM SK2



LAMELLA LAM SK3



CASSETTE PK SK3



FACADE TILE FS SK 1



DESIGN PROFILE PP VK2



LAMELLA LAM SK4



# SELECTED REFERENCES LIGHTWEIGHT EXTERIOR CLADDING DIVISION

















# SISTER COMPANIES

**H&B REAL<sup>®</sup>**

H&B Real offers comprehensive services to all customers in any matter related to trade, valuation, financing, or property management. H&B Real is: Real Estate Agency, Grants from Funds, Property Valuation, Second Green for Savings, and Property Management.

[WWW.HBREAL.CZ](http://WWW.HBREAL.CZ)

**Coleman<sup>si</sup><sup>®</sup>**  
STŘECHY ■ FASÁDY ■ IZOLACE

Coleman S.I., a.s. is one of the largest sellers of materials for roofs. It offers its employees a promising job in a young team with the possibility of professional and personal growth, stable background, the prestige of the company, and other benefits.

[WWW.COLEMAN.CZ](http://WWW.COLEMAN.CZ)

**H&B face<sup>®</sup>** architektura  
projekce

A design and engineering studio offering comprehensive design activities from conception, through project creation to engineering supervision.

[WWW.HBFACE.CZ](http://WWW.HBFACE.CZ)







H & B delta, s. r. o.  
Bobrky 382  
755 01 Vsetín

M: +420 725 675 533  
T: +420 571 499 130  
E: info@hbdelta.cz

[www.hbdelta.cz](http://www.hbdelta.cz)